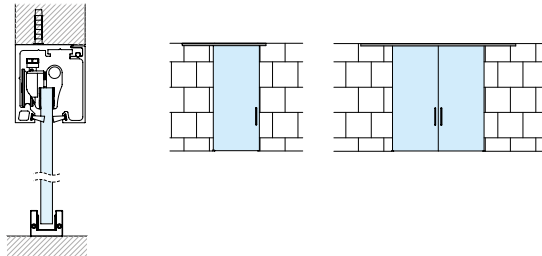


FLUIDO+ 150 PORTE IN VETRO - GLASS DOORS

Soluzioni - Solutions

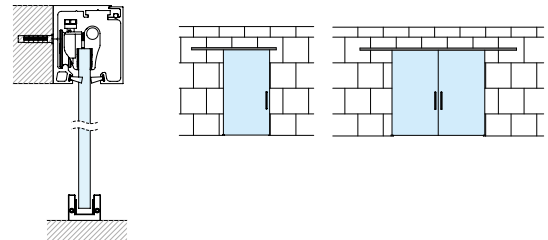
SCORREVOLE A SOFFITTO

Sliding on Ceiling



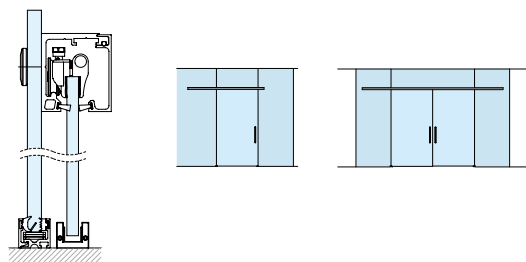
SCORREVOLE A PARETE

Sliding on Wall



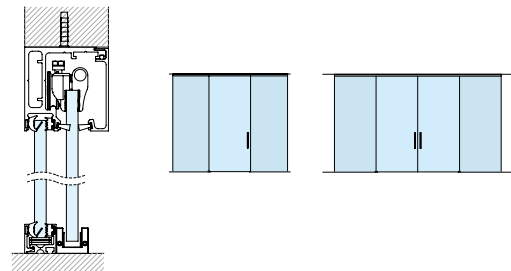
SCORREVOLE SU VETRO FISSO

Sliding on Sidelight



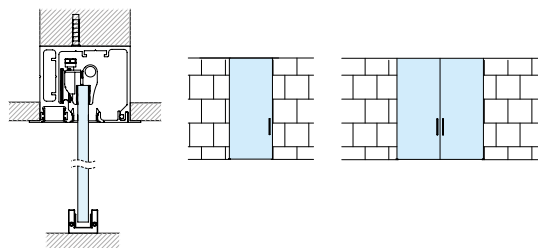
SCORREVOLE A SOFFITTO CON FISSO

Sliding on Ceiling with Sidelight



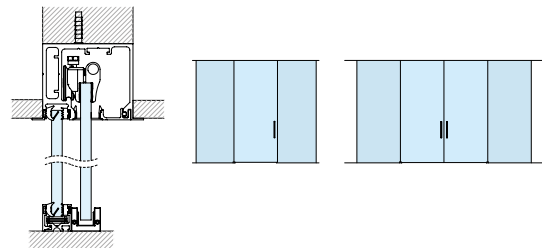
SCORREVOLE A FALSO SOFFITTO

Sliding on False Ceiling



SCORREVOLE A FALSO SOFFITTO CON FISSO

Sliding on False Ceiling with Sidelight



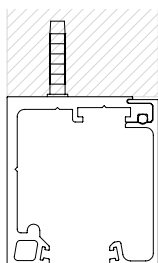
FLUIDO+ 150 PORTE IN VETRO - GLASS DOORS

Caratteristiche Tecniche Profili - Profiles Technical Characteristics

SCORREVOLE A SOFFITTO

Sliding on Ceiling

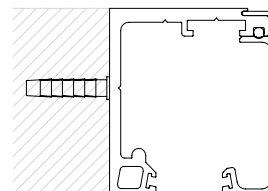
67 x 60 mm



SCORREVOLE A PARETE

Sliding on Wall

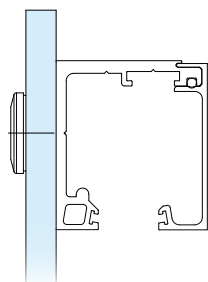
67 x 60 mm



SCORREVOLE SU VETRO FISSO

Sliding on Sidelight

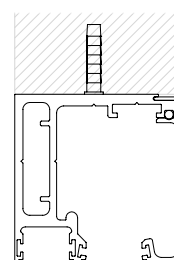
67 x 60 mm



SCORREVOLE A SOFFITTO CON FISSO

Sliding on Ceiling with Sidelight

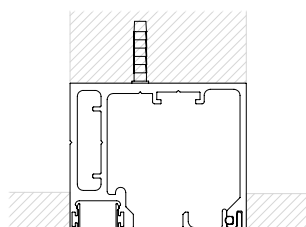
72 x 72 mm



SCORREVOLE A FALSO SOFFITTO

Sliding on False Ceiling

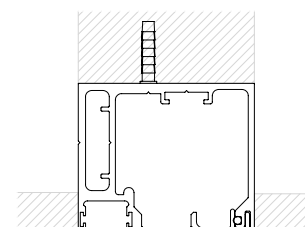
85,4 x 72 mm



SCORREVOLE A FALSO SOFFITTO CON FISSO

Sliding on False Ceiling with Sidelight

85,4 x 72 mm

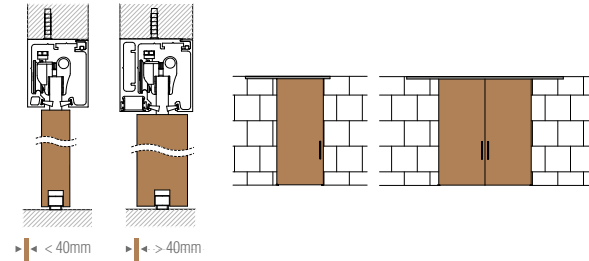


FLUIDO+ 150 PORTE IN LEGNO - WOODEN DOORS

Soluzioni - Solutions

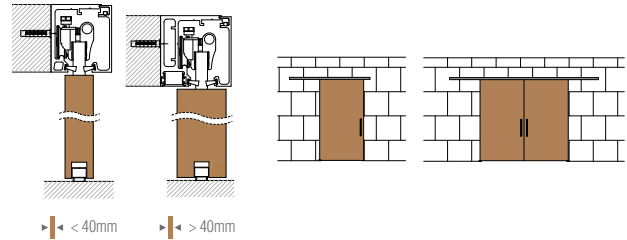
SCORREVOLE A SOFFITTO - PORTA IN LEGNO

Sliding on Ceiling - Wooden Door



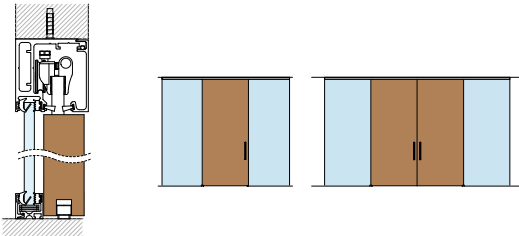
SCORREVOLE A PARETE - PORTA IN LEGNO

Sliding on Wall - Wooden Door



SCORREVOLE A SOFFITTO - PORTA IN LEGNO CON FISSO

Sliding on Ceiling - Wooden Door with Sidelight

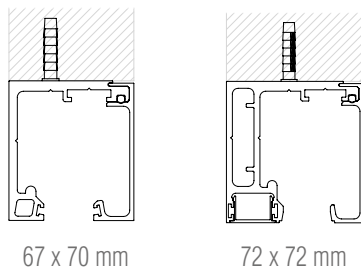


FLUIDO+ 150 PORTE IN LEGNO - WOODEN DOORS

Caratteristiche Tecniche Profili - Profiles Technical Characteristics

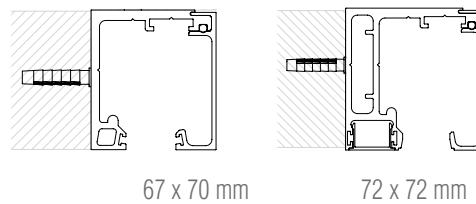
SCORREVOLE A SOFFITTO - PORTA IN LEGNO

Sliding on Ceiling - Wooden Door



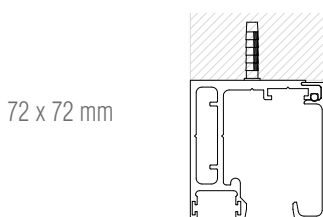
SCORREVOLE A PARETE - PORTA IN LEGNO

Sliding on Wall - Wooden Door









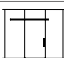









SCORREVOLE A SOFFITTO - PORTA IN LEGNO CON FISSO

Sliding on Ceiling - Wooden Door with Sidelight



FLUIDO+ 150 - Dettagli Tecnici

Technical details

 PORTATA Weight	150kg per porta / for door 330lbs		
 SPESSORE VETRO Glass thickness	10 ÷ 14 mm 3/8" to 9/16"		
 SPESSORE PORTA IN LEGNO Wooden door thickness	28 ÷ 50 mm 1 1/8" to 1 15/16"		
 REGOLAZIONE IN ALTEZZA Height adjustment	6 mm 1/4"		
 DISTANZA A PARETE Wall distance	22 mm 7/8"		
 DISTANZA TRA ANTA E VETRO FISSO Distance between door and sidelight	15.4 ÷ 17.4 mm 5/8" to 11/16"		
 INSTALLAZIONE A VETRO Glass installation	✓		
 INSTALLAZIONE A FALSO SOFFITTO False ceiling installation	✓		
 INSTALLAZIONE TRA PARETI Installation between walls	✓		
 SOFTCLOSE Soft close	Doppio / Double		
 DIMENSIONI MINIME (doppio Softclose) Minimum dimensions (double soft close)	1014 mm 39 3/4"		
 ANTISHOCK Antishock	Doppio / Double		
 DIMENSIONI MINIME (doppio antishock) Minimum dimensions (double antishock)	800 mm 31 1/2"		
 RETAINER MECCANICO Mechanical retainer	Doppio / Double		
 DIMENSIONI MINIME (doppio Retainer) Minimum dimensions (double Retainer)	800 mm 31 1/2"		
 FINITURE Finishes	02 Ossidato naturale Natural oxidized	05 Ossidato nero Black oxidized	13 PVD simil inox similar PVD stainless steel



**CERTIFICAZIONE DURABILITÀ
CICLI CORROSIONE**
Durability certification
Corrosion cycles

DURABILITÀ (100.000 Cicli)
Durability (100.000 Cycles)

PESO DELLA PORTA (da 101 a 330 kg)
Door mass (from 101 up to 330 kg)

SICUREZZA (Grado 1 per tutti gli scorrevoli)
Safety (All sliding must be grade 1)

RESISTENZA ALLA CORROSIONE (Alta resistenza)
Corrosion resistance (High resistance)

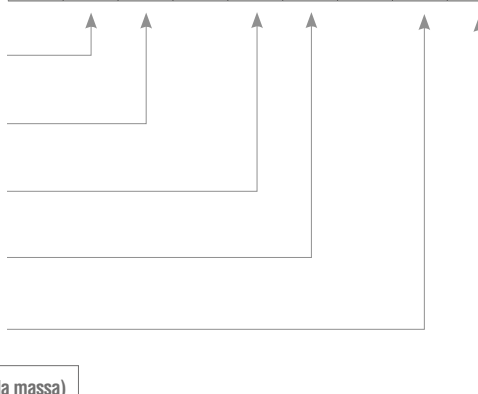
CATEGORIA DELLA PORTA (Porta scorrevole)
Category of door (Sliding door)

FRIZIONE INIZIALE VALORE MASSIMO CONSENTITO (4% della massa)
Initial friction maximum permitted value (4% of the mass)

according to

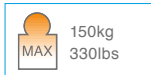
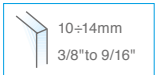
EN1527

- 6 3 - 1 3 - 1 3



FLUIDO+ 150

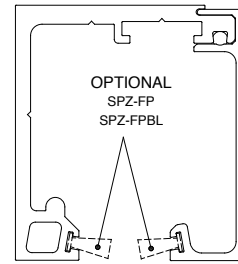
scorrevole a soffitto
sliding on ceiling



- Profili per scorrevole
- fissaggio a soffitto/parete.
- Perfil para sistema corredero
- fijación a techo/pared.
- Profiles for sliders
- fixed on ceiling/wall.
- Schiebesystem Fluido
- Befestigung an der Decke/Wand.
- Profils pour coulissants
- fixation au plafond/mur.

LUNGHEZZE PROFILI - LENGTH OF PROFILES

- B150EK00/2 (2 mt)
- B150EK00/3 (3 mt)
- B150EK00/3.2 (3.2 mt)
- B150EK00/4 (4 mt)
- B150EK00/6 (6 mt)

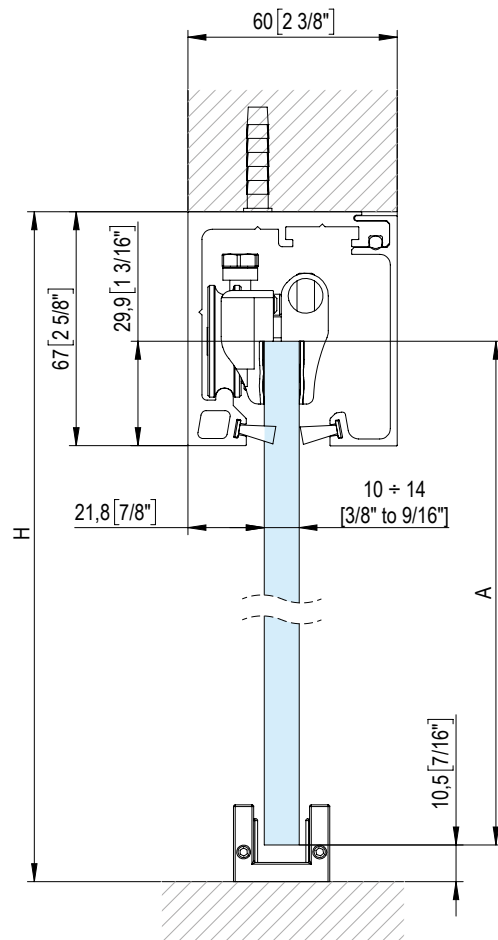
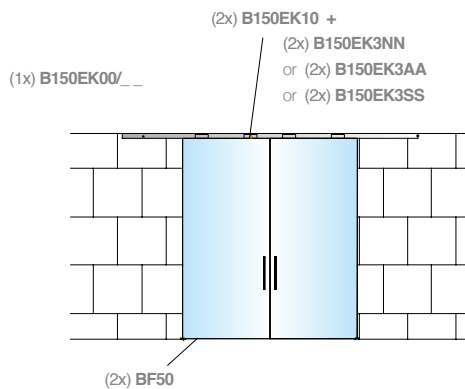
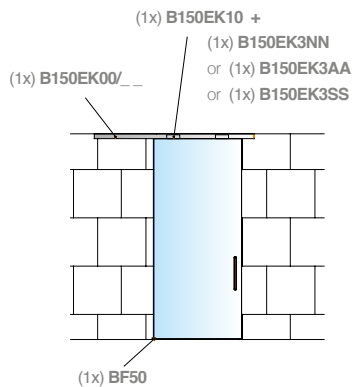


OPTIONAL

FINITURE / COLORS: 02-13

FINITURA / COLOR: 05

guarnizione a spazzola	SPZ-FP/4 (4mt)	SPZ-FPBL/4 (4mt)
brush seal	SPZ-FP/6 (6mt)	SPZ-FPBL/6 (6mt)
	SPZ-FP/6.4 (6.4mt)	SPZ-FPBL/6.4 (6.4mt)
	SPZ-FP/8 (8mt)	SPZ-FPBL/8 (8mt)
	SPZ-FP/12 (12mt)	SPZ-FPBL/12 (12mt)



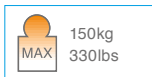
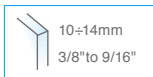
$$A = H - 48$$

$$[A = H - 1 7/8"]$$

Installazione del Fluido 70, 110 e 150 non necessita di forature sul vetro. La instalación del "Fluido 70, 110 y 150" no necesita agujeros en el cristal. The installation of Fluido 70, 110 and 150 does not need holes on the glass. Die Systeme Fluido 70, 110 und 150 benötigen keine Glasbearbeitung. L'installation des coulissants Fluido 70, 110 et 150 ne requiert pas de perçage du verre.

FLUIDO+ 150

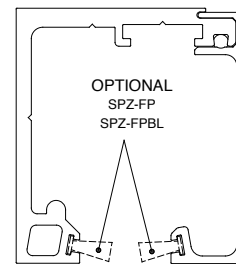
scorrevole a parete
sliding on wall



- Profili per scorrevole
- fissaggio a soffitto/parete.
- Perfil para sistema corredero
- fijación a techo/pared.
- Profiles for sliders
- fixed on ceiling/wall.
- Schiebesystem Fluido
- Befestigung an der Decke/Wand.
- Profils pour coulissants
- fixation au plafond/mur.

LUNGHEZZE PROFILI - LENGTH OF PROFILES

- B150EK00/2 (2 mt)
- B150EK00/3 (3 mt)
- B150EK00/3.2 (3.2 mt)
- B150EK00/4 (4 mt)
- B150EK00/6 (6 mt)

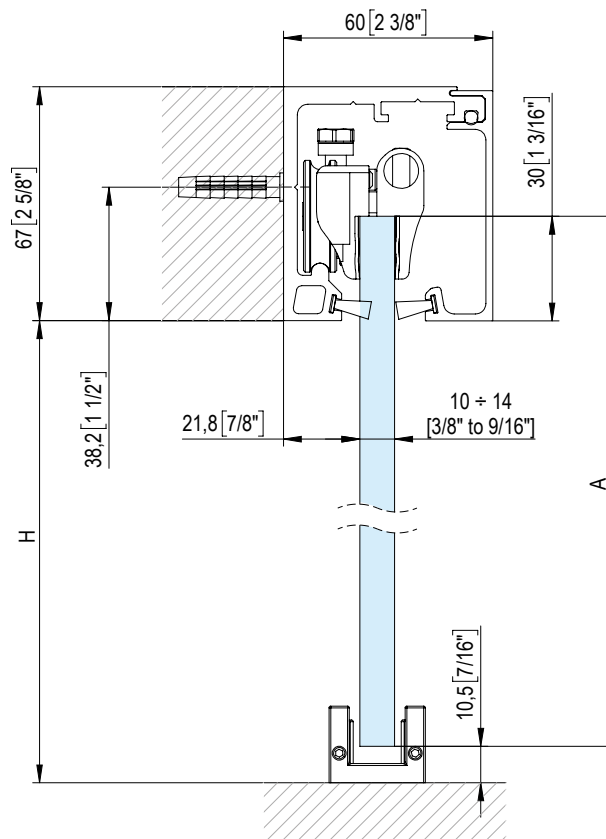
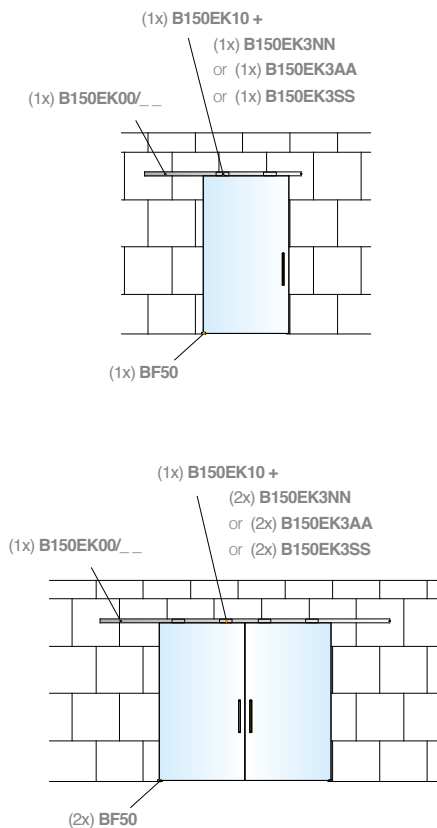


OPTIONAL

FINITURE / COLORS: 02-13

FINITURA / COLOR: 05

guarnizione a spazzola	SPZ-FP/4 (4mt)	SPZ-FPBL/4 (4mt)
	SPZ-FP/6 (6mt)	SPZ-FPBL/6 (6mt)
brush seal	SPZ-FP/6.4 (6.4mt)	SPZ-FPBL/6.4 (6.4mt)
	SPZ-FP/8 (8mt)	SPZ-FPBL/8 (8mt)
	SPZ-FP/12 (12mt)	SPZ-FPBL/12 (12mt)



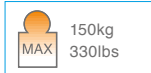
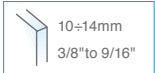
$$A = H + 19$$

$$[A = H + 3/4"]$$

L'installazione del Fluido 70, 110 e 150 non necessita di forature sul vetro. La instalación del "Fluido 70, 110 y 150" no necesita hojas en el cristal. The installation of Fluido 70, 110 and 150 does not need holes on the glass. Die Systeme Fluido 70, 110 und 150 benötigen keine Glasbearbeitung. L'installation des coulissants Fluido 70, 110 et 150 ne requiert pas de perçage du verre.

FLUIDO+ 150

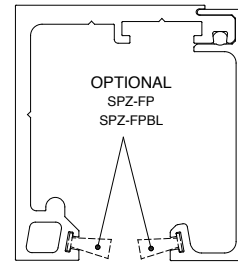
scorrevole su vetro fisso
sliding on sidelight



- Profili per scorrevole
- fissaggio a soffitto/parete.
- Perfil para sistema corredero
- fijación a techo/pared.
- Profiles for sliders
- fixed on ceiling/wall.
- Schiebesystem Fluido
- Befestigung an der Decke/Wand.
- Profils pour coulissants
- fixation au plafond/mur.

LUNGHEZZE PROFILI - LENGTH OF PROFILES

- B150EK00/2 (2 mt)
- B150EK00/3 (3 mt)
- B150EK00/3.2 (3.2 mt)
- B150EK00/4 (4 mt)
- B150EK00/6 (6 mt)

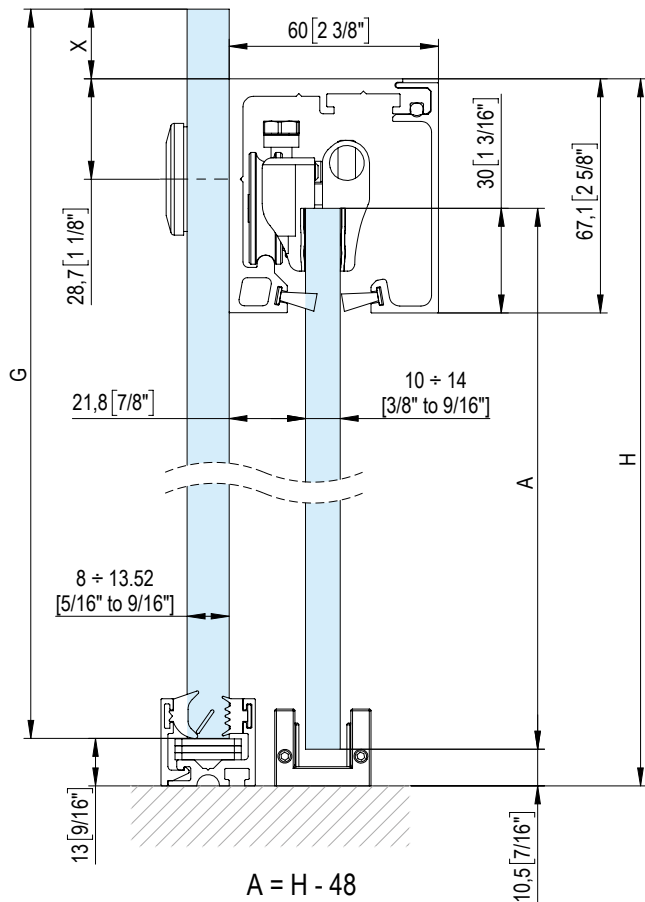
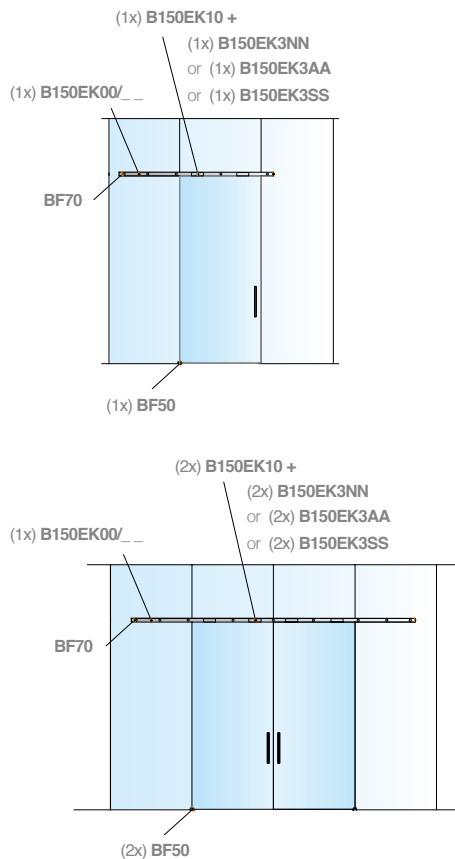


OPTIONAL

FINITURE / COLORS: 02-13

FINITURA / COLOR: 05

guarnizione a spazzola	SPZ-FP/4 (4mt)	SPZ-FPBL/4 (4mt)
brush seal	SPZ-FP/6 (6mt)	SPZ-FPBL/6 (6mt)
	SPZ-FP/6.4 (6.4mt)	SPZ-FPBL/6.4 (6.4mt)
	SPZ-FP/8 (8mt)	SPZ-FPBL/8 (8mt)
	SPZ-FP/12 (12mt)	SPZ-FPBL/12 (12mt)



NON INCLUSI - NOT INCLUDED

P20EJ0810/6

P20EJ1113/6

P20E29/58



Vedere scheda catalogo P20E nella sezione PARTIZIONI
See P20E technical sheet in PARTITIONING section

$$A = H - 48$$

$$[A = H - 1\ 7/8"]$$

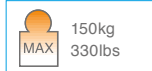
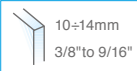
$$G = H + X - 13$$

$$[G = H + X - 1/2"]$$

L'installazione del Fluido 70, 110 e 150 non necessita di forature sul vetro. La instalación del "Fluido 70, 110 y 150" no necesita agujeros en el cristal. The installation of Fluido 70, 110 and 150 does not need holes on the glass. Die Systeme Fluido 70, 110 und 150 benötigen keine Glasbearbeitung. L'installation des coulissants Fluido 70, 110 et 150 ne requiert pas de perçage du verre.

FLUIDO+ 150

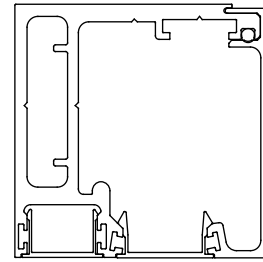
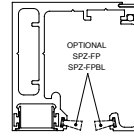
scorrevole a soffitto con fisso
sliding on ceiling with sidelight



- Profili per scorrevole
- fissaggio a soffitto con vetro fisso.
- Perfil para sistema corredero
- fijación a techo con vidrio fijo.
- Profiles for sliders
- fixed on ceiling with fixed glass.
- Schiebeseystem Fluido
- Befestigung an Decke mit Seitenteilen aus Glas.
- Profils pour coulissant
- fixation au plafond avec verre fixe.

LUNGHEZZE PROFILI - LENGTH OF PROFILES

- B150EK01/2 (2 mt)
- B150EK01/3 (3 mt)
- B150EK01/3.2 (3.2 mt)
- B150EK01/4 (4 mt)
- B150EK01/6 (6 mt)



OPTIONAL

guarnizione a spazzola
brush seal

FINITURE / COLORS: 02-13

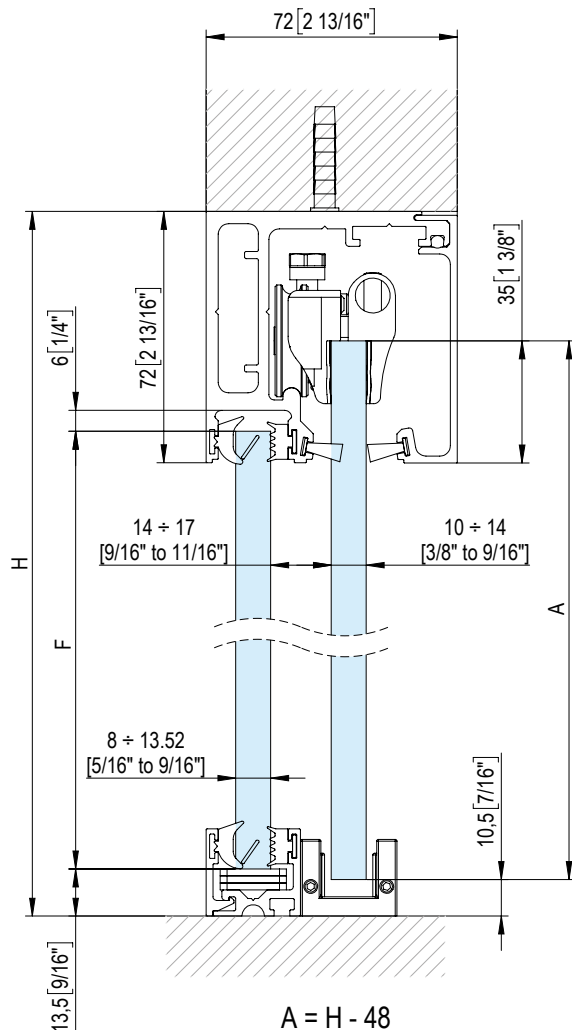
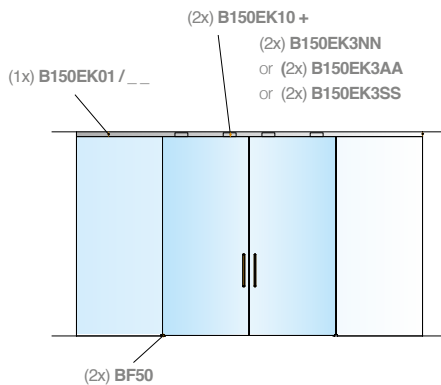
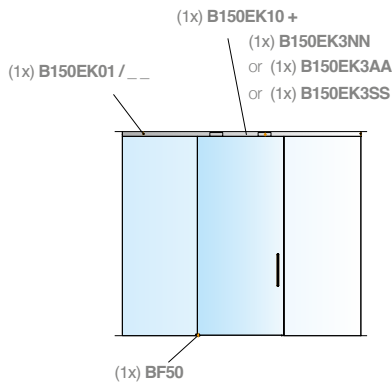
- SPZ-FP/4 (4mt)
- SPZ-FP/6 (6mt)
- SPZ-FP/6.4 (6.4mt)
- SPZ-FP/8 (8mt)
- SPZ-FP/12 (12mt)

FINITURA / COLOR: 05

- SPZ-FPBL/4 (4mt)
- SPZ-FPBL/6 (6mt)
- SPZ-FPBL/6.4 (6.4mt)
- SPZ-FPBL/8 (8mt)
- SPZ-FPBL/12 (12mt)

- B150EP45/2 (2mt)
- B150EP45/3 (3mt)
- B150EP45/3.2 (3.2mt)
- B0150EP45/4 (4mt)
- B150EP45/6 (6mt)

- B150EP46/2 (2mt)
- B150EP46/3 (3mt)
- B0150EP46/3.2 (3.2mt)
- B150EP46/4 (4mt)
- B150EP46/6 (6mt)



$$A = H - 48$$

$$[A = H - 1 \frac{7}{8}"]$$

$$F = H - 77$$

$$[F = H - 3 \frac{1}{16}"]$$

NON INCLUSI - NOT INCLUDED

P20EJ0810/6



P20EJ1113/6



P20E29/58

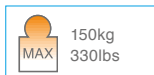
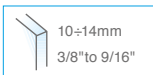


Vedere scheda catalogo P20E nella sezione PARTIZIONI
See P20E technical sheet in PARTITIONING section

L'installazione dei Fluido 70, 110 e 150 non necessita di forature sul vetro. La instalación del "Fluido 70, 110 y 150" no necesita agujeros en el cristal. The installation of Fluido 70, 110 and 150 does not need holes on the glass. Die Systeme Fluido 70, 110 und 150 benötigen keine Glasbearbeitung. L'installation des coulissants Fluido 70, 110 et 150 ne requiert pas de perçage du verre.

FLUIDO+ 150

scorrevole a falso soffitto
sliding on false ceiling



- Profili per scorrevole
- fissaggio a falso soffitto.
- Perfil para sistema corredero
- fijación a cielo falso.
- Kit profiles for sliders
- fixed on false ceiling.
- Profil für Schiebesystem
- Befestigung an abgehängter Decke.
- Profils pour portes coulissantes
- fixation sur faux-plafond.

LUNGHEZZE PROFILI - LENGTH OF PROFILES

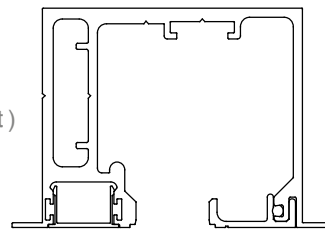
B150EK02/2 (2 mt)

B150EK02/3 (3 mt)

B150EK02/3.2 (3.2 mt)

B150EK02/4 (4 mt)

B150EK02/6 (6 mt)



OPTIONAL

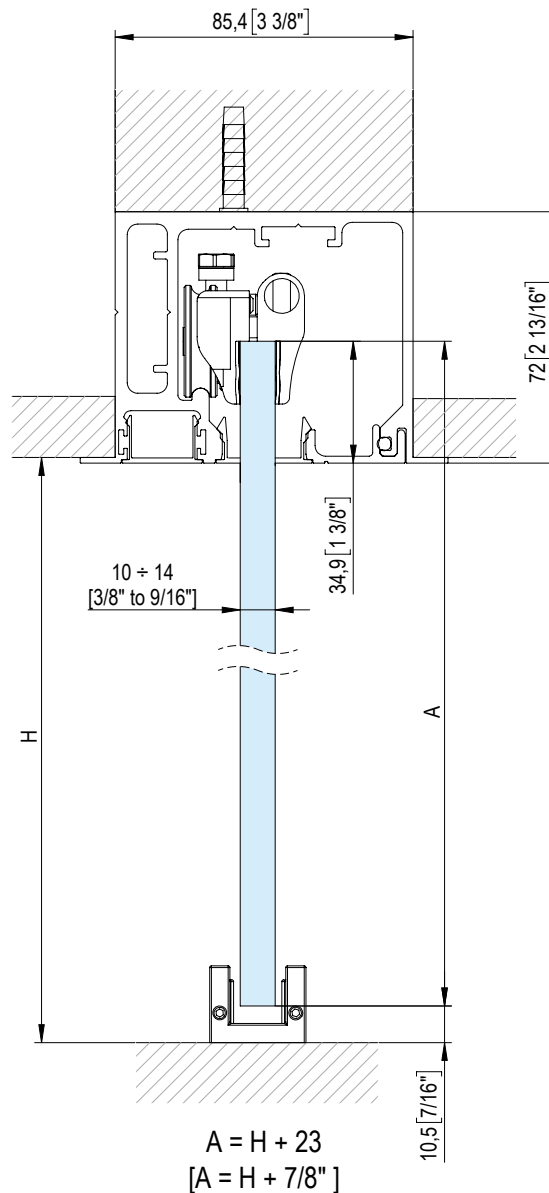
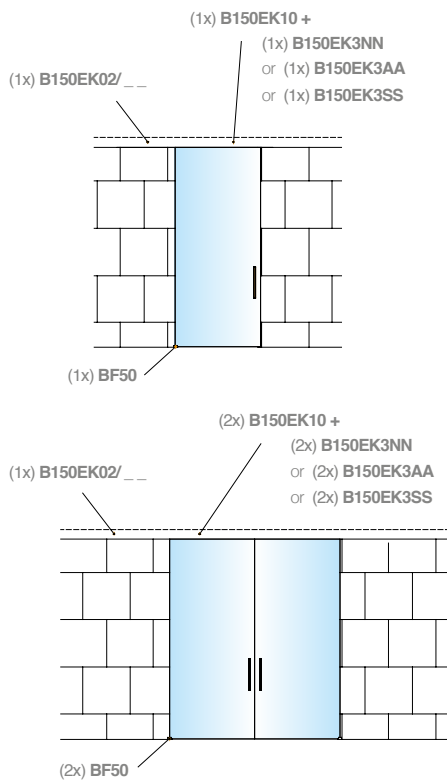
B150EP45/2 (2mt)

B150EP45/3 (3mt)

B150EP45/3.2 (3.2mt)

B0150EP45/4 (4mt)

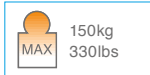
B150EP45/6 (6mt)



L'installazione del Fluido 70, 110 e 150 non necessita di forature sul vetro. La instalación del "Fluido 70, 110 y 150" no necesita hojas en el cristal. The installation of Fluido 70, 110 and 150 does not need holes on the glass. Die Systeme Fluido 70, 110 und 150 benötigen keine Glasbearbeitung. L'installation des coulissants Fluido 70, 110 et 150 ne requiert pas de perçage du verre.

FLUIDO+ 150

scorrevole a falso soffitto con fisso
sliding on false ceiling with sidelight



- Profili per scorrevole
- fissaggio a falso soffitto con vetro fisso.
- Perfil para sistema correrer
- fijación a cielo falso con vidrio fijo.
- Profiles for sliders
- fixed on false ceiling with fixed glass.
- Profil für Schiebeseystem - Befestigung an abgehängter Decke mit Glasseitenteil.
- Profils pour coulissants
- fixation faux-plafond avec verre fixe.

LUNGHEZZE PROFILI - LENGTH OF PROFILES

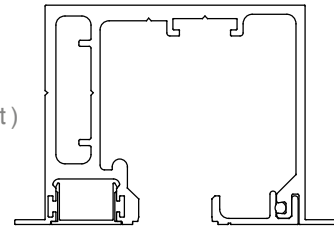
B150EK02/2 (2 mt)

B150EK02/3 (3 mt)

B150EK02/3.2 (3.2 mt)

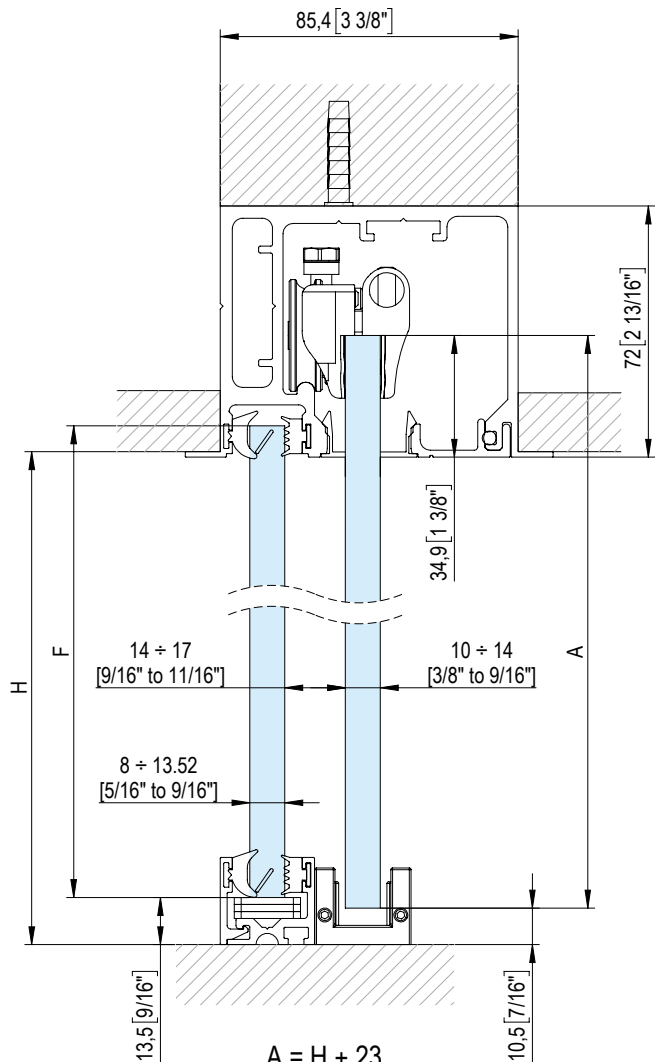
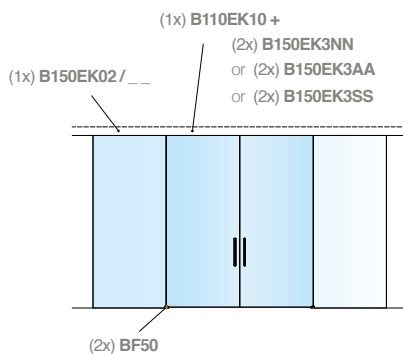
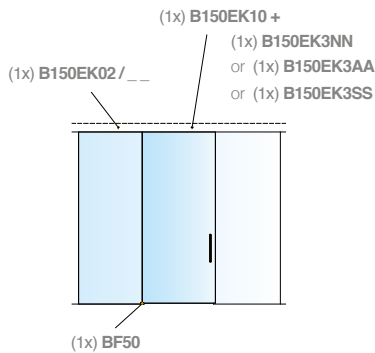
B150EK02/4 (4 mt)

B150EK02/6 (6 mt)



OPTIONAL

- B150EP45/2 (2mt)
- B150EP45/3 (3mt)
- B150EP45/3.2 (3.2mt)
- B0150EP45/4 (4mt)
- B150EP45/6 (6mt)



NON INCLUSI - NOT INCLUDED

P20EJ0810/6

P20EJ1113/6

P20E29/58



Vedere scheda catalogo P20E nella sezione PARTIZIONI
See P20E technical sheet in PARTITIONING section

$$A = H + 23$$

$$[A = H + 7/8"]$$

$$F = H - 6$$

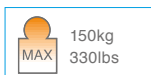
$$[F = H - 1/4"]$$

L'installazione dei Fluido 70, 110 e 150 non necessita di forature sul vetro. La instalación del "Fluido 70, 110 y 150" no necesita agujeros en el cristal. The installation of Fluido 70, 110 and 150 does not need holes on the glass. Die Systeme Fluido 70, 110 und 150 benötigen keine Glasbearbeitung. L'installation des coulissants Fluido 70, 110 et 150 ne requiert pas de perçage du verre.

FLUIDO+ 150



scorrevole a soffitto - porta in legno
sliding on ceiling - wooden door



- Profili per scorrevole in legno
- fissaggio a soffitto.
- Perfil para sistema corredero - puertas de madera
- fijación a techo.
- Profiles for sliders - wooden doors
- fixed on ceiling.
- Schiebesystem Fluido - Holztüren
- Befestigung an der Decke.
- Profils pour coulissants - Portes en bois
- fixation au plafond.

LUNGHEZZE PROFILI - LENGTH OF PROFILES

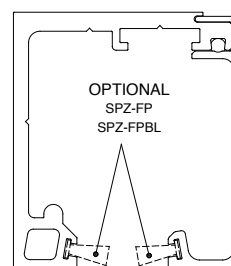
B150EK00/2 (2 mt)

B150EK00/3 (3 mt)

B150EK00/3.2 (3.2 mt)

B150EK00/4 (4mt)

B150EK00/6 (6mt)



OPTIONAL

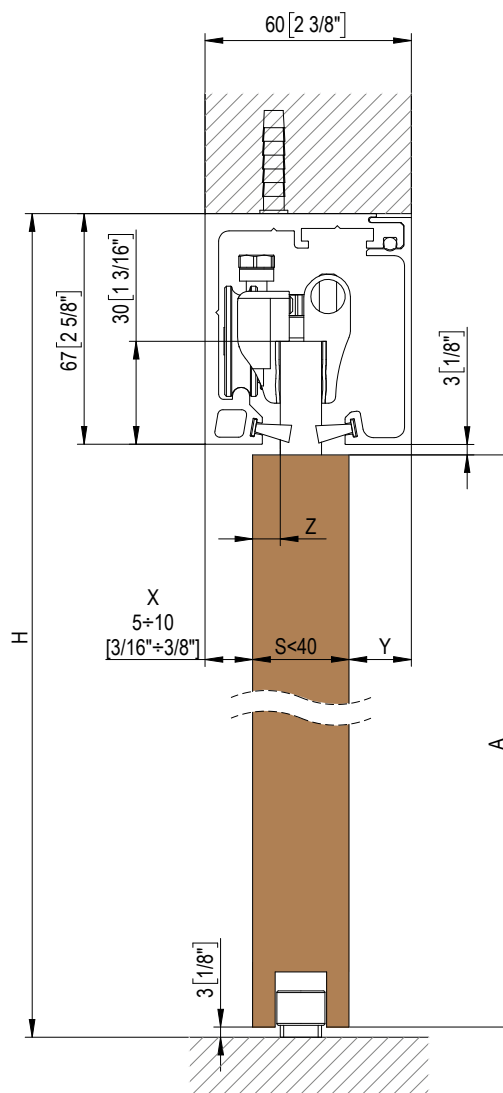
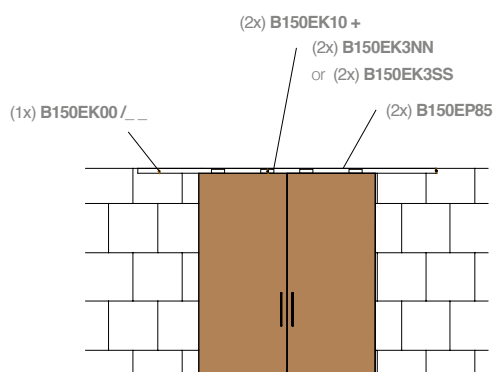
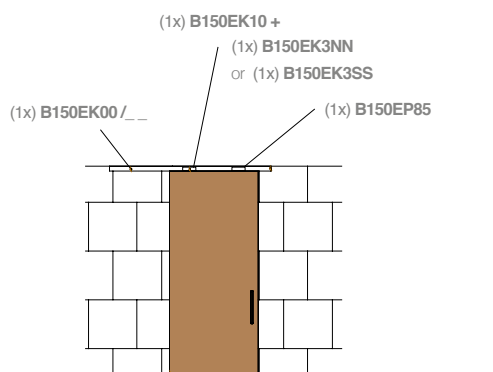
FINITURE / COLORS: 02-13

FINITURA / COLOR: 05

guarnizione
a spazzola
brush seal

SPZ-FP/4 (4mt)
SPZ-FP/6 (6mt)
SPZ-FP/6.4 (6.4mt)
SPZ-FP/8 (8mt)
SPZ-FP/12 (12mt)

SPZ-FPBL/4 (4mt)
SPZ-FPBL/6 (6mt)
SPZ-FPBL/6.4 (6.4mt)
SPZ-FPBL/8 (8mt)
SPZ-FPBL/12 (12mt)



$$A = H - 73$$

$$[A = H - 2 7/8"]$$

$$Y = 60 - X - S$$

$$[Y = [2 3/8" - X - S]$$

$$Z = 22 - X$$

$$[Z = 7/8" - X]$$

FLUIDO+ 150



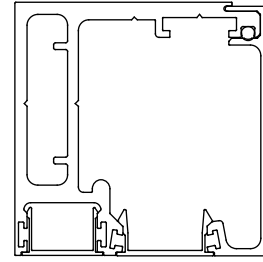
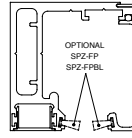
scorrevole a soffitto - porta in legno
sliding on ceiling - wooden door



- Profili per scorrevole in legno - fissaggio a soffitto.
- Perfil para sistema corredero puertas de madera - fijación a techo.
- Profiles for sliders - wooden doors - fixed on ceiling.
- Schiebeseystem Fluido - Holztüren - Befestigung an der Decke.
- Profils pour coulissants - Portes en bois - fixation au plafond.

LUNGHEZZE PROFILI - LENGTH OF PROFILES

- B150EK01/2** (2 mt)
- B150EK01/3** (3 mt)
- B150EK01/3.2** (3.2 mt)
- B150EK01/4** (4 mt)
- B150EK01/6** (6 mt)



OPTIONAL

guarnizione a spazzola
brush seal

FINITURE / COLORS: 02-13

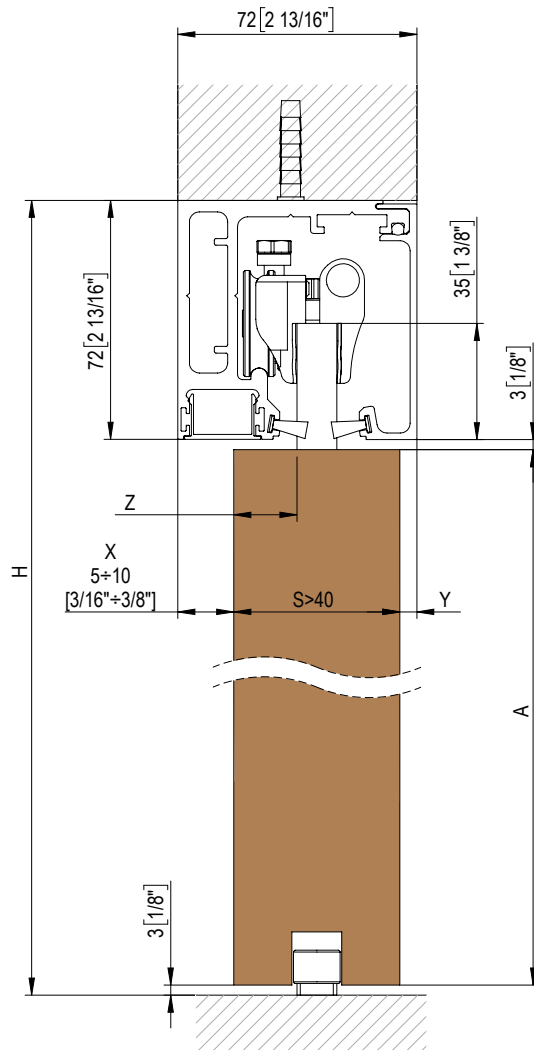
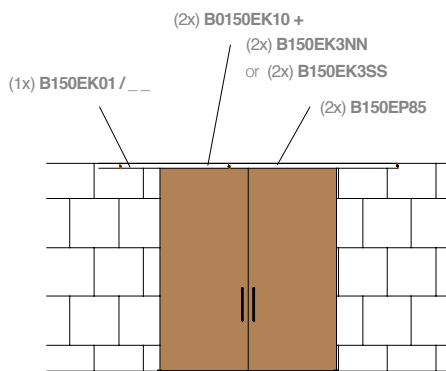
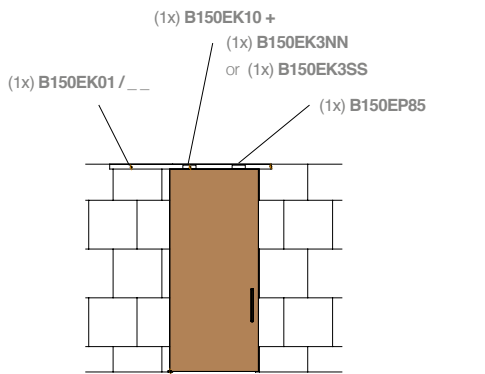
- SPZ-FP/4 (4mt)
- SPZ-FP/6 (6mt)
- SPZ-FP/6.4 (6.4mt)
- SPZ-FP/8 (8mt)
- SPZ-FP/12 (12mt)

FINITURA / COLOR: 05

- SPZ-FPBL/4 (4mt)
- SPZ-FPBL/6 (6mt)
- SPZ-FPBL/6.4 (6.4mt)
- SPZ-FPBL/8 (8mt)
- SPZ-FPBL/12 (12mt)

- B150EP45/2 (2mt)
- B150EP45/3 (3mt)
- B150EP45/3.2 (3.2mt)
- B0150EP45/4 (4mt)
- B150EP45/6 (6mt)

- B150EP46/2 (2mt)
- B150EP46/3 (3mt)
- B0150EP46/3.2 (3.2mt)
- B150EP46/4 (4mt)
- B150EP46/6 (6mt)



$$A = H - 78$$

$$[A = H - 3 \frac{1}{16}"]$$

$$Y = 72 - X - S$$

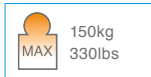
$$[Y = [2 \frac{13}{16} - X - S]$$

$$Z = 36 - X$$

FLUIDO+ 150



scorrevole a parete - porta in legno
sliding on wall - wooden door



- Profili per scorrevole in legno
- fissaggio a parete.
- Perfil para sistema corredero - puertas de madera
- fijación a pared.
- Profiles for sliders - wooden doors
- fixed on wall.
- Schiebeseystem Fluido - Holztüren
- Befestigung an der Wand.
- Profils pour coulissants - Portes en bois
- fixation au mur.

LUNGHEZZE PROFILI - LENGTH OF PROFILES

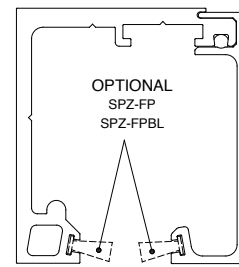
B150EK00/2 (2 mt)

B150EK00/3 (3 mt)

B150EK00/3.2 (3.2 mt)

B150EK00/4 (4mt)

B150EK00/6 (6mt)



OPTIONAL

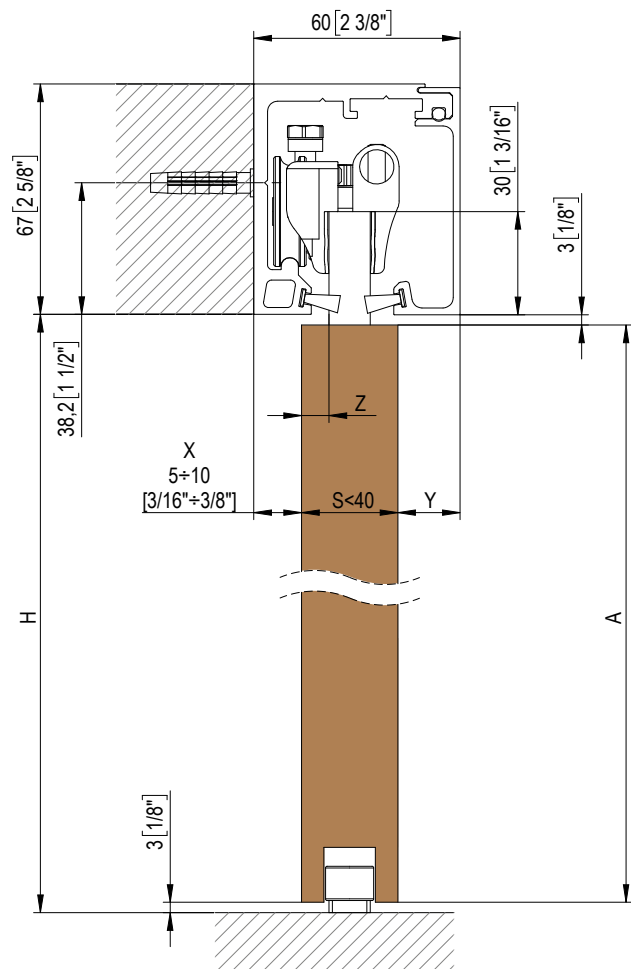
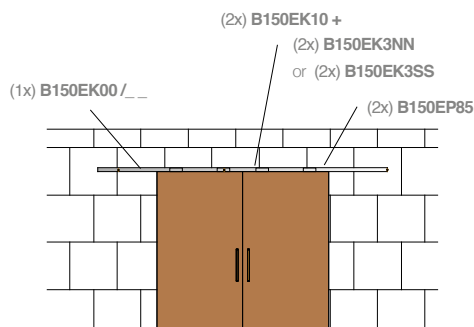
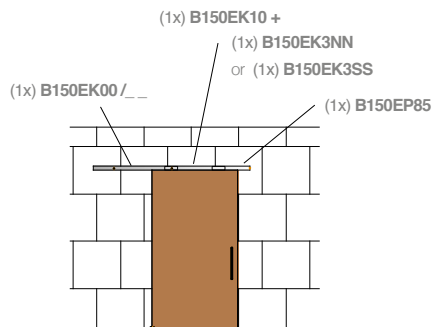
FINITURE / COLORS: 02-13

FINITURA / COLOR: 05

guarnizione
a spazzola
brush seal

SPZ-FP/4 (4mt)
SPZ-FP/6 (6mt)
SPZ-FP/6.4 (6.4mt)
SPZ-FP/8 (8mt)
SPZ-FP/12 (12mt)

SPZ-FPBL/4 (4mt)
SPZ-FPBL/6 (6mt)
SPZ-FPBL/6.4 (6.4mt)
SPZ-FPBL/8 (8mt)
SPZ-FPBL/12 (12mt)



$$A = H - 6$$

$$[A = H - 1/4"]$$

$$Y = 60 - X - S$$

$$[Y = [2 3/8" - X - S]$$

$$Z = 22 - X$$

$$[Z = 7/8" - X]$$

FLUIDO+ 150



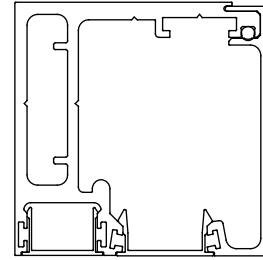
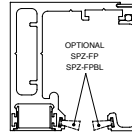
scorrevole a parete - porta in legno
sliding on wall - wooden door



- Profili per scorrevole in legno - fissaggio a parete.
- Perfil para sistema corredero puertas de madera - fijación a pared.
- Profiles for sliders - wooden doors - fixed on wall.
- Schiebesystem Fluido - Holztüren - Befestigung an der Wand.
- Profils pour coulissants - Portes en bois - fixation au mur.

LUNGHEZZE PROFILI - LENGTH OF PROFILES

- B150EK01/2 (2 mt)
- B150EK01/3 (3 mt)
- B150EK01/3.2 (3.2 mt)
- B150EK01/4 (4 mt)
- B150EK01/6 (6 mt)



OPTIONAL

guarnizione a spazzola
brush seal

FINITURE / COLORS: 02-13

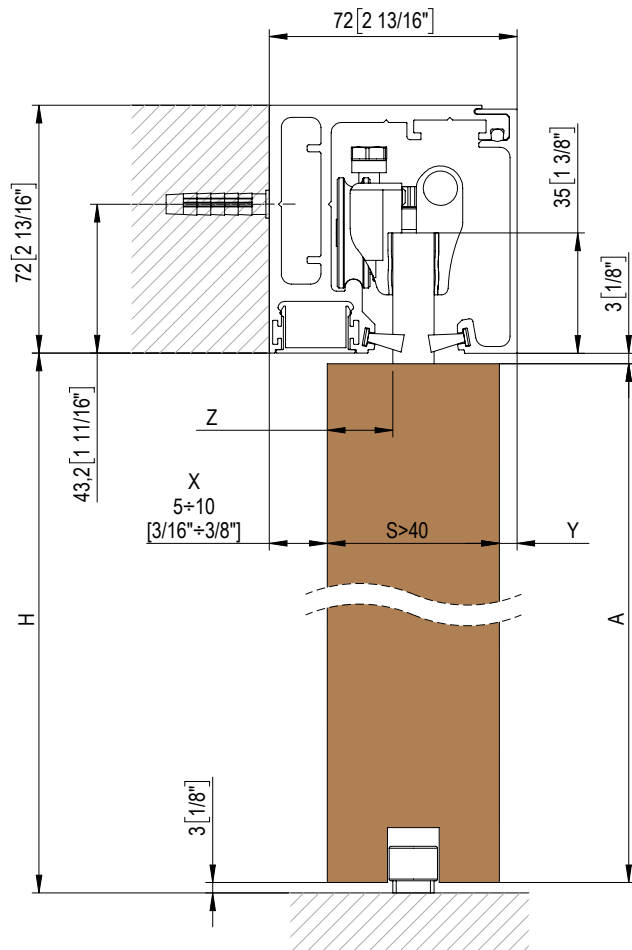
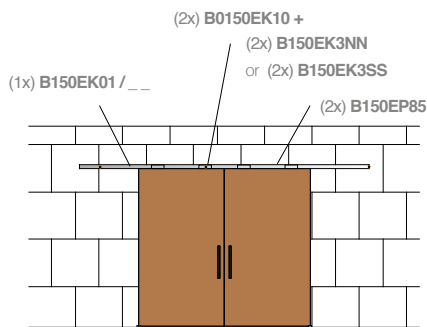
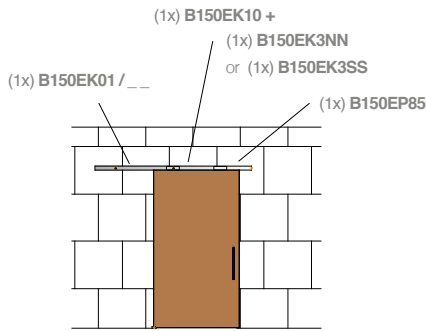
- SPZ-FP/4 (4mt)
- SPZ-FP/6 (6mt)
- SPZ-FP/6.4 (6.4mt)
- SPZ-FP/8 (8mt)
- SPZ-FP/12 (12mt)

FINITURA / COLOR: 05

- SPZ-FPBL/4 (4mt)
- SPZ-FPBL/6 (6mt)
- SPZ-FPBL/6.4 (6.4mt)
- SPZ-FPBL/8 (8mt)
- SPZ-FPBL/12 (12mt)

- B150EP45/2 (2mt)
- B150EP45/3 (3mt)
- B150EP45/3.2 (3.2mt)
- B0150EP45/4 (4mt)
- B150EP45/6 (6mt)

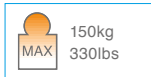
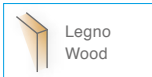
- B150EP46/2 (2mt)
- B150EP46/3 (3mt)
- B0150EP46/3.2 (3.2mt)
- B150EP46/4 (4mt)
- B150EP46/6 (6mt)



$$\begin{aligned}
 A &= H - 6 \\
 [A &= H - 1/4"] \\
 Y &= 72 - X - S \\
 [Y &= [2\ 13/16" - X - S] \\
 Z &= 36 - X \\
 [Z &= 1\ 7/16" - X]
 \end{aligned}$$

FLUIDO+ 150

scorrevole a soffitto - porta in legno con fisso
sliding on ceiling - wooden door with sidelight



- Profili per scorrevole in legno
- fissaggio a soffitto con vetro fisso.
- Perfil para sistema corredero - puertas de madera
- fijación a techo con vidrio fijo.
- Profiles for sliders - wooden doors
- fixed on ceiling with fixed glass.
- Schiebesystem Fluido - Holztüren
- Befestigung an Decke mit Seitenteilen aus Glas.
- Profils pour coulissant - Portes en bois
- fixation au plafond avec verre fixe.

LUNGHEZZE PROFILI - LENGTH OF PROFILES

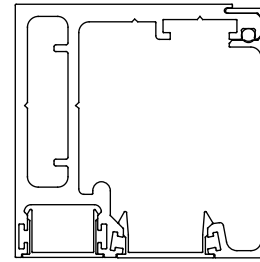
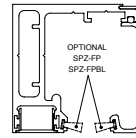
B150EK01/2 (2 mt)

B150EK01/3 (3 mt)

B150EK01/3.2 (3.2 mt)

B150EK01/4 (4 mt)

B150EK01/6 (6 mt)



OPTIONAL

guarnizione a spazzola
brush seal

FINITURE / COLORS: 02-13

SPZ-FP/4 (4mt)
SPZ-FP/6 (6mt)
SPZ-FP/6.4 (6.4mt)
SPZ-FP/8 (8mt)
SPZ-FP/12 (12mt)

FINITURA / COLOR: 05

SPZ-FPBL/4 (4mt)
SPZ-FPBL/6 (6mt)
SPZ-FPBL/6.4 (6.4mt)
SPZ-FPBL/8 (8mt)
SPZ-FPBL/12 (12mt)

B150EP45/2 (2mt)

B150EP45/3 (3mt)

B150EP45/3.2 (3.2mt)

B0150EP45/4 (4mt)

B150EP45/6 (6mt)

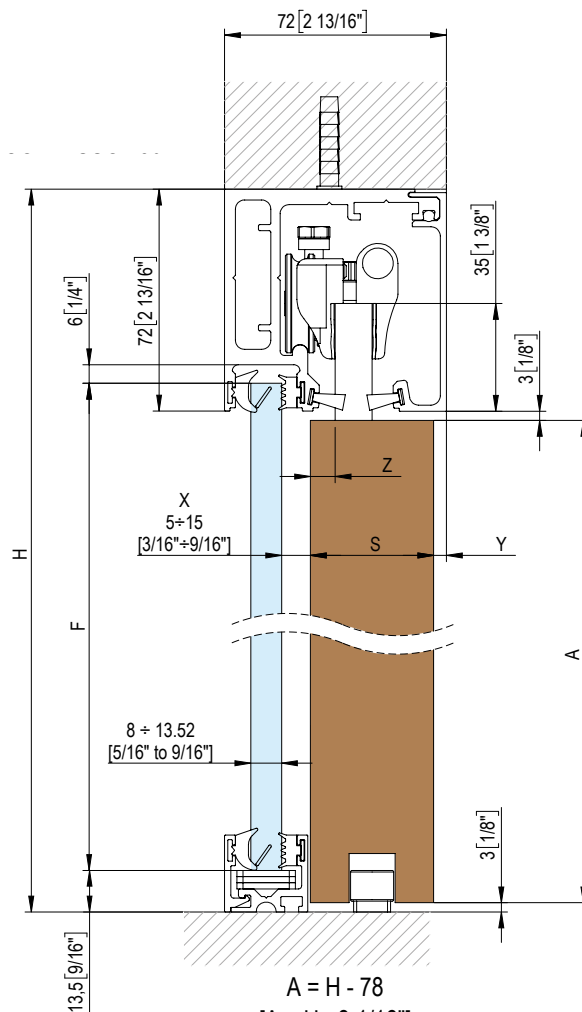
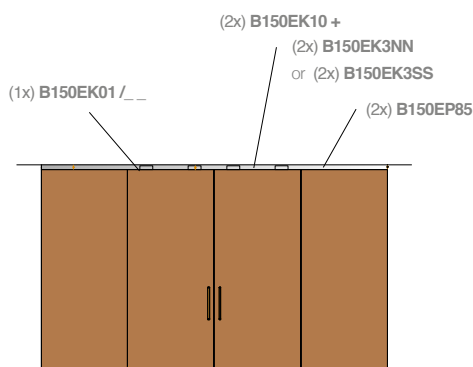
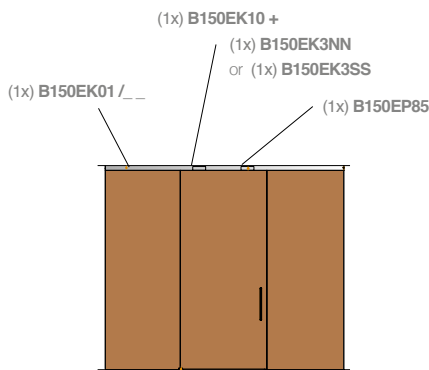
B150EP46/2 (2mt)

B150EP46/3 (3mt)

B0150EP46/3.2 (3.2mt)

B150EP46/4 (4mt)

B150EP46/6 (6mt)



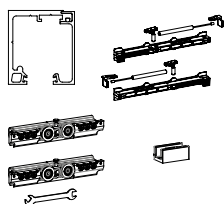
$$\begin{aligned}
 A &= H - 78 \\
 [A &= H - 3 \frac{1}{16}"] \\
 F &= H - 77 \\
 [F &= H - 3 \frac{1}{16}"] \\
 Y &= 72 - X - S \\
 [Y &= [2 \frac{13}{16} - X - S] \\
 Z &= 17 - X \\
 [Z &= 11 \frac{1}{16} - X]
 \end{aligned}$$

FLUIDO+ 150 - KIT

Components

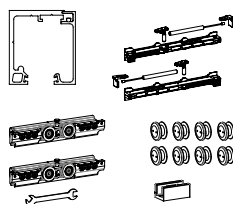
KB150CS0/3.2

- Kit scorrevole parete/soffitto con doppio soft-close.
- Kit corredizo de pared / techo con doble Soft-close
- Sliding wall / ceiling kit with double soft-close
- Schiebeward- / Deckensatz mit doppeltem Soft-Close
- Kit mur / plafond coulissant à double Soft-Close.



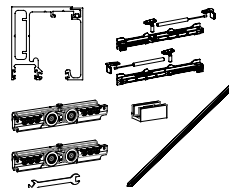
KB150SS0/3.2

- Kit scorrevole su vetro fisso con doppio soft-close.
- Kit corredizo sobre vidrio fijo con doble Soft-close
- Sliding kit on fixed glass with double soft-close
- Schiebesatz auf festem Glas mit doppeltem Soft-Close
- Kit coulissant sur verre fixe avec double Soft-Close



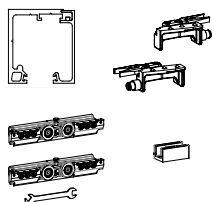
KB150FS0/3.2

- Kit scorrevole a soffitto con fisso, con doppio soft-close.
- Kit de techo corredizo fijo con doble Soft-close
- Fixed sliding ceiling kit with double soft-close
- Festes Schiebedeckenset mit doppeltem Soft-Close
- Kit plafond fixe coulissant avec à double Soft-Close



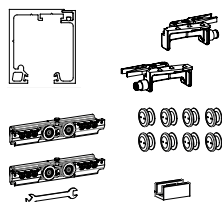
KB150CM0/3.2

- Kit scorrevole parete/soffitto con retainer e stop meccanico.
- Kit corredizo de techo / pared con retenedor y tope mecánico
- Sliding wall / ceiling kit with retainer and mechanical stop
- Schiebeward- / Deckensatz mit Halterung und mechanischem Anschlag
- Kit mur / plafond coulissant avec arrêtoir et butée mécanique



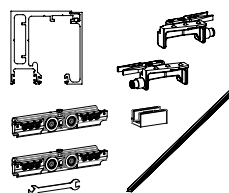
KB150SM0/3.2

- Kit scorrevole su vetro fisso con retainer e stop meccanico.
- Kit corredizo sobre vidrio fijo con retenedor y tope mecánico
- Sliding kit on fixed glass with retainer and mechanical stop
- Schiebesatz auf festem Glas mit Halter und mechanischem Anschlag
- Kit coulissant sur verre fixe avec arrêtoir et butée mécanique



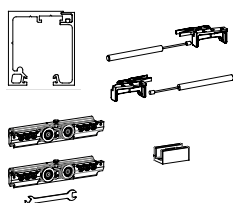
KB150FM0/3.2

- Kit scorrevole a soffitto con fisso, con retainer e stop meccanico.
- Kit de techo corredizo fijo, con retenedor y tope mecánico.
- Sliding ceiling kit with fixed, with retainer and mechanical stop
- Schiebedeckensatz mit fester, mit Halterung und mechanischem Anschlag
- Kit plafond coulissant avec fixe, avec arrêtoir et butée mécanique



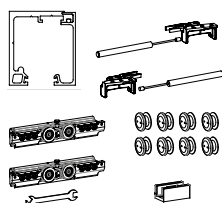
KB150CA0/3.2

- Kit scorrevole parete/soffitto con retainer e antishock.
- Kit corredizo de pared / techo con retenedor y Antishock
- Sliding wall / ceiling kit with retainer and Antishock
- KSchiebeward- / Deckensatz mit Halter und Antishock
- Kit mur / plafond coulissant avec retenue et Antishock



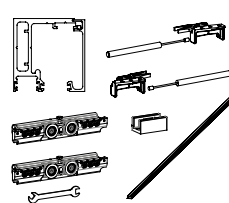
KB150SA0/3.2

- Kit scorrevole su vetro fisso con retainer e antishock.
- Kit corredizo sobre vidrio fijo con retenedor y Antishock
- Sliding kit on fixed glass with retainer and Antishock
- Schiebesatz auf festem Glas mit Halter und Antishock
- Kit coulissant sur verre fixe avec retenue et Antishock



KB150FA0/3.2

- Kit scorrevole a soffitto con fisso, con retainer e antishock.
- Kit de techo corredizo con fija, con retenedor y Antishock
- Sliding ceiling kit with fixed, with retainer and Antishock
- Schiebedecken-Kit mit fester, mit Halter und Antishock
- Kit plafond coulissant avec fixe, avec retenue et Antishock



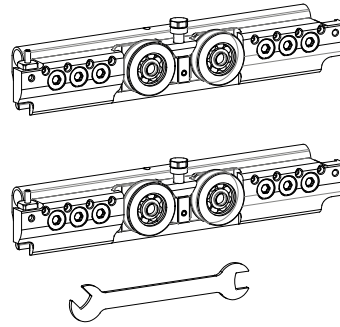
FLUIDO+ 150 - KIT

Components

B150EK10

Min. 800mm
Min. 31 1/2"

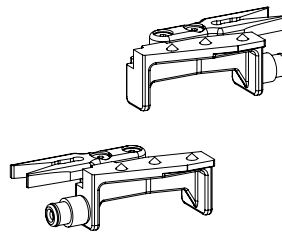
- Kit coppia pinze con chiave
- Kit par de pinzas con llave
- Kit with pair of clamps with key
- Bausatz ein Paar Zangen mit Schlüssel
- Kit paire de pinces avec clé



B150EK3NN

Min. 800mm
Min. 31 1/2"

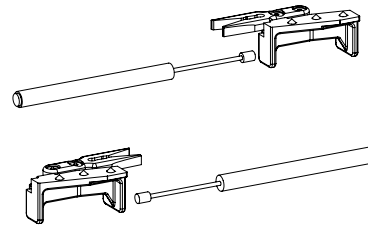
- Kit coppia Retainer. Stop meccanico
- Kit par tope mecánico
- Kit with pair of mechanical stops
- Bausatz ein Paar mechanische Stopper
- Kit paire arrêt mécanique



B150EK3AA

Min. 800mm
Min. 31 1/2"

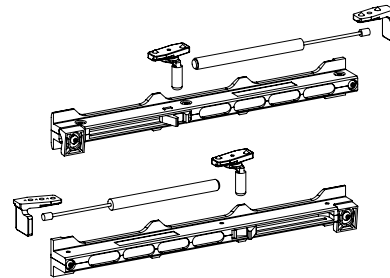
- Kit coppia Retainer + Antishock
- Kit par tope mecánico + antichoque
- Kit with pair of mechanical stops and anti-shock feature
- Bausatz ein Paar mechanische Stopper + Antishock
- Kit paire arrêt mécanique + butée antichoc



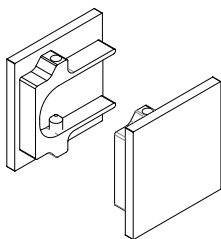
B150EK3SS

Min. 1014mm
Min. 39 3/4"

- Kit coppia Soft Close CPCS
- Kit par Soft Close CPCS
- Kit with Soft Close CPCS pair
- Bausatz ein Paar Soft Close CPCS
- Kit paire Soft Close CPCS

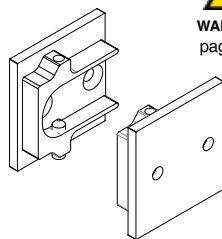


B150EP73



- Coppia di tappi.
- Par de tapones
- Pair of caps
- Paar Kappen
- Paire de bouchons

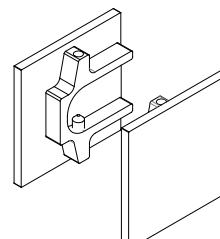
B150EP74



!
WARNING
pag. 346

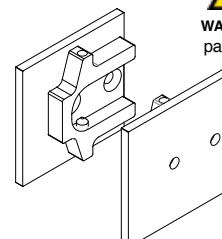
- Coppia di tappi forati.
- Par de tapones perforados
- Pair of perforated caps
- Paar Lochkappen
- Paire de bouchons perforés

B150EP75



- Coppia di tappi per versione con fisso laterale.
- Par de tapones para versión con cristal fijo lateral
- Pair of caps for model with side fixed glass
- Paar Kappen für Version mit festem Seitenglas
- Paire de bouchons pour version avec vitrage fixe latéral

B150EP76



!
WARNING
pag. 346

- Coppia di tappi forati per versione con fisso laterale.
- Par de tapones perforados para versión con cristal fijo lateral
- Pair of perforated caps for model with side fixed glass
- Paar Lochkappen für Version mit festem Seitenglas
- Paire de bouchons perforés pour version avec vitrage fixe latéral

FLUIDO+ 150 - COMPONENTI

Components

B150EP64

- Spessore per Veletta - senza vetro fisso
Consigliato per binari oltre i 2,5m.
- Cuña para panel – sin cristal fijo
Aconsejado para perfiles de largo superior a 2,5 m
- Spacer for casing – without fixed glass
Recommended for rails longer than 2,5 m
- Distanzstück für Anlauf – ohne festes Glas.
Empfohlen für Profilen über 2,5 m
- Épaisseur pour panneau – sans vitrage fixe
Recommandé pour les profils de plus de 2,5 m



B150EP65

- Spessore per Veletta - con vetro fisso
Consigliato per binari oltre i 2,5m.
- Cuña para panel – con cristal fijo
Aconsejado para perfiles de largo superior a 2,5 m
- Spacer for casing – with fixed glass
Recommended for rails longer than 2,5 m
- Distanzstück für Anlauf – mit festem Glas
Empfohlen für Profilen über 2,5 m
- Épaisseur pour panneau – avec vitrage fixe
Recommandé pour les profils de plus de 2,5 m

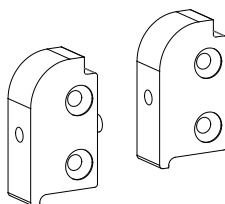


B150EP77



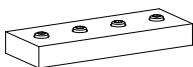
WARNING
pag. 346

- Coppia supporti laterali
- Par de soportes laterales
- Pair of side fittings
- Paar Seitenträger
- Paire de supports latéraux



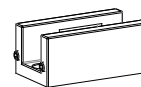
B150EP48

- Tassello di collegamento - per vetro fisso
- Pieza de unión - para cristal fijo
- Connection insert - for fixed glass
- Verbindungsdübel - für festem Glas
- Tasseau d'assemblage - pour vitrage fixe



BF50

- Guida a terra.
- Guía de suelo
- Ground slide
- Bodenführung
- Guide au sol



SPZ-FP

SPZ-FPBL

- Guarnizione a spazzola in tessuto
- Guarnición de tela
- Fabric brush seal
- Stoffbürstendichtung
- Joint de brosse en tissu



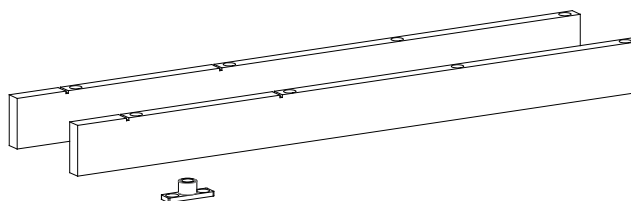
SPZ-FP



SPZ-FPBL

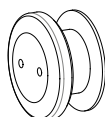
B150EP85

- Kit accessorio per porte in legno.
- Kit accesorios para puertas de madera.
- Accessory kit for wooden doors.
- Zubehörkit für Holztüren.
- Kit accessoires pour portes en bois.



BF70

- Borchia per fissaggio barra a vetro.
- Perno de fijación de la barra al cristal
- Boss for securing glass bar
- Senkschraube zur Befestigung der Stange am Glas
- Clou de fixation de la barre à la vitre



Lunghezza barra

Longitud de la barra
Bar length
Profililänge
Longueur de barre

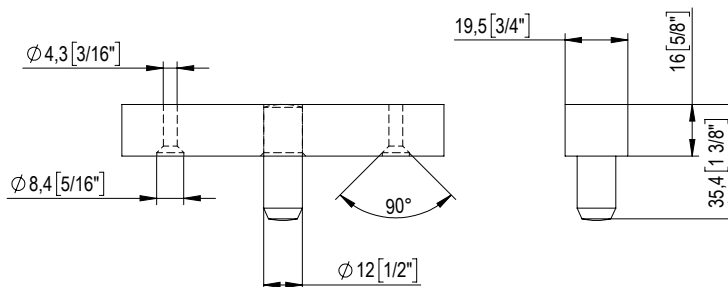
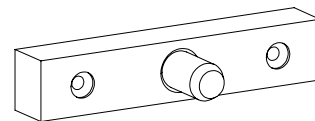
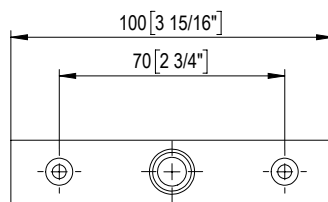
Quantità borchie

Cantidad tornillos
Quantity of studs
Anzahl der Stifte
Quantité

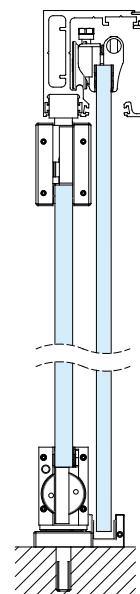
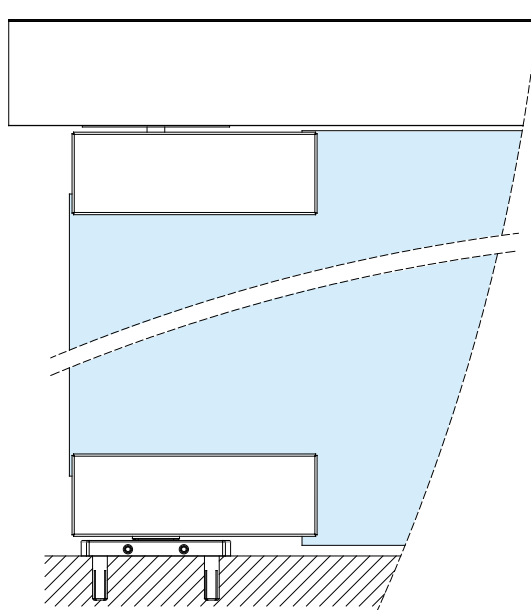
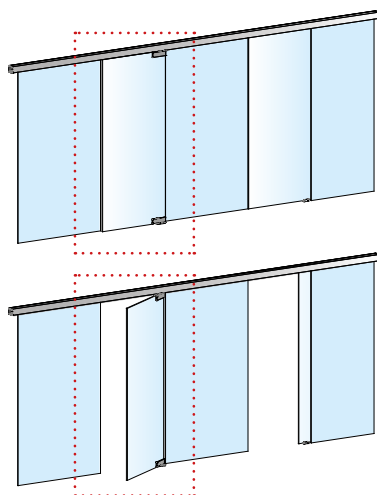
2 mt	5
3 mt	7
3,2 mt	8
4 mt	10
6 mt	15

B150EP27

- Perno per porte battenti da applicare ad estrusi Fluido+.
- Pernio para puertas batientes, por aplicar a perfiles Fluido+.
- Spindle for swing doors, to be applied to Fluido+ profiles.
- Drehpunkt für Pendeltüren für Fluido+ Profilen.
- Pivot pour portes battantes à appliquer sur profils Fluido+.



ESEMPIO APPLICAZIONE CON CERNIERA UNICA 101E10 - 100E20



Con porta in chiusura/apertura contro il muro, è necessario tagliare il vetro come da disegno (per B110EP74 - B110EP76 - B110EP77)

With door closing/opening against the wall, it is necessary to cut the glass as per drawing (only B110EP74 - B110EP76 - B110EP77)

LE POSIZIONI DI STOP E PINZE DEVONO FARE RIFERIMENTO A QUESTO PUNTO

THE POSITIONS OF STOP AND CLAMPS MUST REFER TO THIS POINT

